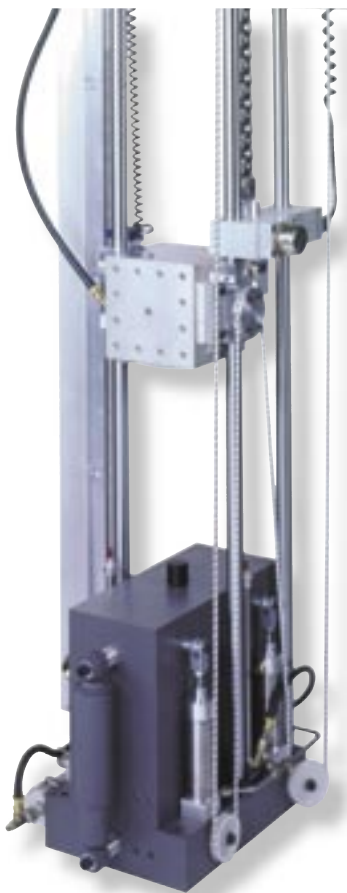


Model 15-D Shock Test System

Lansmont's Model 15-D Shock Test System is the smallest shock test system we manufacture. Ideal for analyzing the shock fragility of small electronic or fiber optic devices, the Model 15-D utilizes a revolutionary shock table that allows the user to test their products in two orientations simultaneously. The Model 15-D features an electronic hoist lifting system for easy table positioning and floating seismic reaction mass to isolate shock energy from transmitting to the surrounding laboratory space. The Model 15-D is outfitted standard with Lansmont's NEW TouchTest Shock II Table Top Control Console.

Model 15-D Features:

- Superior shock pulse quality- the Model 15-D's unique magnesium shock carriage design can generate nearly ideal half sine shock pulses.
- Two-faced Model 15-D shock carriage incorporates a table hole pattern on both the top and front surfaces.



- Lansmont's TouchTest Shock II Controls incorporated with Lansmont's Test Partner 3 Data Acquisition System provide the most powerful shock system controller available!
- Half sine, sawtooth and trapezoidal shock pulse capabilities.
- Electric hoist for table position and seismic base impact surface that is on a low frequency, damped suspension system.
- Full range of applications training programs available.
- Worldwide Customer Service department.



Model 15-D Shock Test System

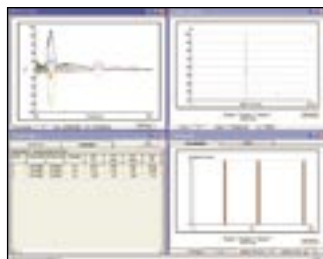
TECHNICAL SPECIFICATIONS

PHYSICAL	
Maximum Specimen Weight	40 lb. (18 kg)
Table Mounting Surface:	
Side to Side (between guide rods)	6.0 in. (15.2 cm)
Front to Back	6.0 in. (15.2 cm)
PERFORMANCE	
Maximum Acceleration	2000 g
Shock Pulse Duration Range	0.25–60 Msec *
Maximum Velocity Change	Up to 32 Ft/Sec (9.7 M/Sec)
MACHINE SIZE	
Height	96 in. – 120 in. (244 cm – 305 cm)
Front to Back	15 in. (38 cm)
Width	18 in. (46 cm)
UTILITIES	
Voltage	100–220 VAC
Frequency	50 Hz–60 Hz
Phase	Single Phase
Current	4A–8A
Nitrogen (For squarewave programmers only)	Bottled Nitrogen @ 2,000 psi (138 bar)
Plant Air	80–120 psi (5.6–8.4 kg/cm ²)
SHIPPING WEIGHT	
Shipping Weight	800 lbs (363 kg) Approximate

* with appropriate programming kits

TouchTest Shock II Controls:

- Available in either Bench-Top or Full “System Station” packages.
- Fully integrated machine set-up and control.
- Touch-screen user interface.
- New shock pulse predictor feature...makes setting up shock pulses easier than ever.
- Automatically communicates with Lansmont’s Test Partner 3 Data Acquisition and Analysis System for the most advanced shock analysis ever.



Lansmont
Corporation